

RELEVANCE

As today's youth are further removed from farming, many do not understand the importance of agriculture and how it impacts their daily lives. The average American is three generations removed from the farm. According to a national survey conducted by the United States Farmers and Ranchers Alliance in 2011, 72% of consumers know nothing or very little about farming or ranching. However, 70% say their purchase decisions are affected by how food is grown and raised. In addition, the US Census shows that less than 2% of the population is made up of farm and ranch families.

Youth have the idea that food they consume comes from the store and do not understand where/how the product originated. This is a very common problem with Brown County youth today because most families are not educated about agriculture and farming. Science of agriculture programs have been successful vehicles to educate youth on the importance of agriculture. Specifically, Path to the Plate makes the connection between agriculture and health. Furthermore, a program that can encompass educating youth on agriculture and giving insight to possible career avenues would benefit participants.



RESPONSE

The goal of Livestock Education program is to explore "Path to the Plate" for beef, pork, and sheep/goats. This program gives youth (9th - 12th grade) an opportunity to learn how the product is produced and processed.

Youth participants will explore:

- Livestock Production (Youth will learn about livestock operations)
- Livestock Selection (Youth will learn about selection of market & breeding livestock)
- Livestock Harvesting (Youth will learn how livestock animals are harvested)
- Getting to know the Cuts (Youth will learn what the cuts of meat are)
- Grilling 101 (Youth will learn how to grill/barbecue)

The Brown County Texas Community Futures Forum and Leadership Advisory Board has identified Livestock Education: Path to the Plate as an educational approach to address Educating Youth on Basic Life Skills, Engaging Diversified Youth, and College & Career Prep for Youth & Family in the county.

TARGET AUDIENCE

- This program was targeted towards Blanket ISD 9th - 12th grade students.

PARTNERSHIPS & COLLABORATORS

- Junior Urias from Up in Smoke Barbecue, Tom Guthrie Mills County Texas A&M AgriLife Extension, and Blanket ISD which contributed greatly to the success of this youth outcome.

*December 19, 2022
(Exhibit #7)*

Nick

VALUE STATEMENT

Path to the Plate

PATH TO THE PLATE is a research-based education program that helps consumers understand how their food choices impact their health.

Agriculture plays an important role in our daily lives. From the production of food to its harvest, to how it arrives on our table. Specifically, we need to understand how our meat we consume makes it to our plates at home.

14 %
OF TEXANS work in the
agriculture and food industry

98.6%

of Texas farms and ranches are
family farms, partnerships or family-
held operations

IN TEXAS, THERE ARE

242,000

FARM OPERATION WHICH
OPERRATE OVER

130 million

Acres



Evaluation Strategy

A pre & post-test and a retrospective post evaluation was utilized to measure knowledge gained along with behavior changes. A total of 13 of 13 (100%) participants completed the pre & post-test and retrospective evaluation instruments.

Summary

The value of Livestock Education – Path to the Plate program can be seen from the results. There was positive knowledge changes in all areas of the curriculum. The retrospective evaluation also showed that students gained a better understanding of where their meat products come from. Which will assist with their decisions of purchasing different cuts of meat in the future.



Future Programming

Based on the results of this program and feedback from participants, Brown County Texas A&M AgriLife Extension will continue with efforts of reaching more youth in the county through the Livestock Education – Path to the Plate program. With the number of farm and ranching families continuing to decline, there will be a need to implement the program throughout Brown County schools, as well as, reaching more youth across the state.



“I personally did not know how they processed the meat — how they go from the cows to the factory and how we get our meat on our plate — and I learned how they did that. I think it’s pretty interesting and it was cool that I had the chance to learn that.”

RESULTS

Statement with Answer	Rate of Correct Responses		
	Pre-Test	Post-Test	Percent Change
Swine are grouped into Maternal & Terminal categories.	0%	100%	Highest
Beef Cattle Production System order.	8.0%	92%	1200%
Muscle is the 1 st priority to evaluate in market livestock.	15%	100%	550%
Texas Raises more than 5 million calves annually.	15%	92%	500%
Cattle will be in the feedlot approximately 120 days .	23%	100%	333.3%
Cooking a ribeye steak 130°F to 135°F internal temp is medium rare.	23%	100%	333.3%
160°F is considered a minimum safe internal temperature to cook ground meats.	31%	100%	225%
Short Ribs comes from the Chuck .	39%	100%	160%
There are Over 130,000 cow-calf operations in Texas.	46%	100%	116.7%
Texas Ranchers care for Over 600,000 sheep.	46%	100%	116.7%
A weaned pig that is ready to finish for slaughter is considered a Feeder pig .	54%	100%	85.7%
The Porterhouse steak comes from the Loin .	54%	100%	85.7%
The Boston Butt is located in Shoulder .	54%	100%	85.7%
Sheep meat from yearlings or older is called Mutton and has strong bolder flavors.	62%	100%	62.5%
Vertical integrated farms are where the owner may own the feedmill, all production units, and the packing plant.	62%	100%	62.5%
Lipstick is a by-product of beef cattle. True	69%	100%	44.4%
Insulin is Not a by-product of pork. False	69%	100%	44.4%
Cow-calf operation is a management unit that maintains a breeding herd of cows and produces weaned calves for sale.	69%	92%	33.3%
In a Farrow to Finish operation a management unit will maintain a sow herd and carry the production through market weight.	83%	100%	30%
Livestock deposit fat from front to back and top to bottom. True	85%	100%	18.2%

*The pre-test was administered 10 days before the program.

Green indicates significant positive changes (50%≤)



For More Information:

**Nick
Gonzales**

CEA 4-H & YD
Brown County

325-646-0386

nigonzales@ag.tamu.edu

TEXAS A&M
**AGRILIFE
EXTENSION**

Extension programs of Texas AgriLife Extension Service are open to all people without regard to race, color, sex, religion, national origin, age, disability, genetic information, veteran status, sexual orientation, gender identity or any other classification protected by federal, state or local law. The Texas A&M University System, U.S. Department of Agriculture, and the County Commissioners Courts of Texas

AGRILIFEEXTENSION.TAMU.EDU

RELEVANCE

Youth today are lacking the development of basic skills of decision making and public speaking that are beneficial to young adults. The need to be prepared for college and/or career enrichment by assisting in developing life skills is valuable. Youth's success in the future, in any field, most likely will depend on their ability to make the right decision at the right time. Therefore, the livestock judging project will be introduced.

Livestock judging is a highly competitive experience that enhances independent decision-making abilities while challenging participants to process information quickly and be able to defend a position or decision. Livestock judging allows personal growth and development as it requires a student to think critically. It can teach youth valuable time management skills, responsibility, and how to be competitive while demonstrating honesty, integrity, and respect.

The purpose of 4-H projects like this is to help youth develop a keen sense of judgment and confidence to make decisions based on sound reasons; which is designed to develop the youth of our state into productive adult citizens.

RESPONSE

The goal of implementing livestock judging is to give youth an opportunity to develop skills of communication, decision-making, problem-solving, self-motivation and organization. This will be done through a series of educational practices and contest.

- Livestock Judging Workshop – The purpose of Livestock Judging
- Livestock Judging Workshop – Market Animal Evaluation
- Livestock Judging Workshop – Breeding Animal Evaluation
- Livestock Judging Workshop – Live Animal Evaluation
- Livestock Judging Camps
- Oral Reasons Workshop
- Livestock Judging Contest

The Brown County Youth Board and Leadership Advisory Board has identified Livestock Judging as an educational approach to address the preparing youth for college and career enrichment by assisting in developing life skills in the county.

TARGET AUDIENCE

- This program was targeted towards Brown County 4-H youth 3rd to 12th grade.

PARTNERSHIPS & COLLABORATORS

- Brown County 4-H volunteers and local livestock producers contributed greatly to the success of this youth outcome.

VALUE STATEMENT

The 4-H Program uses a non-formal educational process of engaging youth in an "learning by doing" process. Through this entire process, youth are learning key life skills such as working with others, teamwork, cooperation, and goal setting.

Over 350 Hrs.

Practice and Contest

25

Contest

915

**Livestock Classes
Evaluated**



LIFE SKILLS

Participants were asked if livestock judging influenced the following life skills:

- **Decision Making.**
- **Ability to Relate to Others**
- **Build Positive Self-Esteem**
- **Self-Motivation**
- **Developing Organizational Skills**
- **Ability to Problem Solve**
- **Develop Oral Communication Skills**
- **Setting Goals**
- **Developing Self-Discipline**
- **Developing Self-Motivation**
- **Work in Teams**

Each participant, **12 of 12 (100%)**, showed a positive influence in these life skills by completing the Livestock Judging program.



Evaluation Strategy

A retrospective post was utilized to measure knowledge gained and adoptions of best practices. A total of 12 of 12 (100%) participants completed the retrospective post survey instrument.

RESULTS

A total of 12 youth (3rd - 12th grade) participated in livestock judging. Youth participants were asked to rate their level of understanding on key topics taught during the project, below is a summary of those responses.

- 10 of 12 (83%) respondents said they had an increase of **understanding of how to evaluate market livestock.**
- 10 of 12 (83%) respondents said they had an increase of **understanding of how to evaluate breeding livestock.**
- 9 of 12 (75%) respondents said they had an increase of **understanding the proper techniques to take notes.**
- 9 of 12 (75%) respondents said they had an increase of **understanding of how to prioritize items when placing livestock.**
- 8 of 12 (67%) respondents said they had an increase of **understanding of how to help other kids learn about judging livestock.**
- 8 of 12 (67%) respondents said they had an increase of **understanding of how to prepare a set of oral reasons.**
- 8 of 12 (67%) respondents said they had an increase of **understanding of the overall livestock industry.**

Leadership Decision Making

- **12 of 12 (100%)** respondents said that what they learned will provide them with the ability to make better leadership decisions.

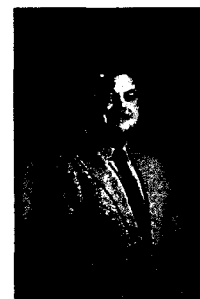
Summary

In conclusion, results indicate that the livestock judging project in Brown County met its objectives of increasing the understanding of livestock and influencing youth through life skills. It was shown that more than half of the youth were impacted by the program in a positive manner. These results help provide evidence that the livestock judging project was properly implemented to address the youth issues that were presented by the Brown County Texas Community Futures Forum.

"Being able to evaluate livestock has helped me become a better leader by giving myself an ability to make decisions that I am confident about and therefore able to teach others and become a better leader."

Future Programming

Based on the results of this program and feedback from participants, Brown County 4-H will continue with efforts of reaching more youth in the county through the Livestock Judging project. With more interest from youth, it will assist with addressing the issue of gaining more 4-H membership through diverse projects.



For More Information:

**Nick
Gonzales**

CEA 4-H & YD
Brown County

325-646-0386

nigonzales@ag.tamu.edu